

This project is currently under application for the JST program, and the results of the review will be announced by the end of February. Please note that this notice is provided prior to the confirmation of review, and there is a possibility that the recruitment may be suspended or the number and content may be changed depending on the review results.

Call for Selection for PhD Candidates Support Project

Graduate School of Medicine, Science and Technology, Shinshu University Next Generation Advanced Human Resources/Regional Innovators Development Program (JST Support for Pioneering Research Initiated by the Next Generation (SPRING) program)

Application Guidelines for April 2024

Shinshu University starts providing salary-style support consisting of a stipend to defray living expenses along with research funding to talented students enrolled in doctoral programs from the 2021 academic year under Support for Pioneering Research Initiated by the Next Generation (SPRING) program of JST (<https://www.jst.go.jp/jisedai/en/outline/index.html>).

Starting from the fiscal year 2024, we will implement initiatives that have evolved into the "Next Generation Advanced Human Resources/Regional Innovators Development Program" as the "Second Shinshu Tamonjuku".

An overview of the project follows. These guidelines summarize the requirements for selection of this project.

Program Objectives

- To help doctoral program students pursue free, challenging, and cross-discipline research that goes beyond traditional boundaries
- To provide an environment in which students can focus on research by providing research incentives
- To prepare talented doctoral program students so they can flourish through a diverse array of career paths

Shinshu University initiative

Next Generation Advanced Human Resources/Regional Innovators Development Program

Program career and personal development content

Doctoral students establish the "Shinshu Tamonjuku" as a platform to refine their aspirations towards societal and academic transformations through research activities. Fueled by creative interdisciplinary exchanges, they engage with outstanding overseas researchers and pioneer entrepreneurs, fostering individuals with high academic expertise who can boldly tackle challenges and take action to solve them.

Program Website: <https://www.shinshu-u.ac.jp/graduate/jisedai/>

1. Eligibility

Applicants must have been enrolled in the Shinshu University Graduate School of Medicine, Science and Technology as of April 1st, 2024.

However, the following individuals are not eligible, regardless of whether they meet the above requirements:

Ineligible individuals
1. Students who have been selected as a special fellow (DC) by the Japan Society for the Promotion of Science(JSPS)
2. International students who are being supported by a Japanese government (Monbukagakusho: MEXT) scholarship (Including "JICA")
3. International students who are receiving scholarship or other support from their home country
4. Students with a stable income in the form of salary or director remuneration from a company or other organization that provides sufficient funds to cover their living expenses (amount of

¥2.4 million or more per year)

5. Recipients of other scholarships (including those who are in the process of applying) who are not allowed to receive the scholarship together with this project
6. Students who are on a leave of absence
7. Students who are planning to withdraw before completing their doctoral program
8. Students who have been enrolled for longer than the standard term of study

2. Application Requirements

The person eligible for support shall meet all of the following criteria

- Individuals who possess a willingness to contribute to the science, technology, and innovation of our country, and who have the motivation to engage in challenge-driven research with high academic expertise and intellectual curiosity for problem-solving.
 - Students who conduct research on future issues and potential challenges [Future Technology Science (FTS) type], or students who conduct research based on their intellectual curiosity [Curiosity-Driven Science (CDS) type].
 - Those who have a sufficient understanding of the purpose of this project and the responsibilities imposed on the participants, and who are willing to cooperate in activities related to this project.
 - Individuals who actively participate in the "Shinshu Tamonjuku" project.
 - Those who intend to apply for the Japan Society for the Promotion of Science Special Researcher (DC2) program after the second year of their doctoral program.
 - In the case of international students, those who have a willingness to contribute to the science, technology, and innovation of Japan.
- ※ Regarding international students, as part of the JST project's objectives, it is required to promote acceptance from a wider range of countries and regions, particularly from ASEAN countries, in order to create an environment for learning and understanding values based on diverse cultural backgrounds. The selection process will include the above criteria as evaluation points.

3. Number of Places

- April, 2024 : A few individuals

The number of recruits is undetermined as it depends on the adoption results of the JST project.

4. Research Incentives

Total annual amount: ¥2.7 million (stipend of ¥2.4 million and research funding of ¥300,000)

5. Funding Period

Up to three years after selection (or for students in a four-year program, up to four years)

If the period of enrollment exceeds the standard length of study, any subsequent period will not be eligible for support.

However, the funding period may be canceled, extended, or otherwise adjusted based on students' individual circumstances, including life events such as childbirth and responsibilities such as parenting and nursing care.

Additionally, the funding period may be shortened if certain conditions under which funding may be canceled or terminated are satisfied.

※The amount of support for research encouragement stipend, etc. may change depending on the status of budgetary measures from JST or government.

6. Application Documents

Prepare the prescribed slides and videos explaining your research and submit them after obtaining approval from your faculty advisor.

(*Selection will be canceled if a student is found to have included false information on his or her application

documents.)

(1) Future Technology & Science-style (FTS)

Your research proposal should provide a description of social problems or issues that could occur in the future. It should also explain how the research topic you're pursuing in your doctoral program will provide a resolution process for those issues.

Moreover, you should also provide a specific description of the goals and objectives you have established, the means and methods you will use to achieve them, and the difficulties you anticipate facing.

Additionally, you should describe how your research findings will contribute to human society 30 years or 50 years in the future, from a long-term perspective.

(2) Curiosity-Driven Science-style (CDS)

Your research proposal should describe the motivation for the research that you will try in your doctoral program based on your intellectual curiosity, as well as the background and perspective that characterized that process.

You should also provide a specific description of the goals and objectives you have established, the means and methods you will use to achieve them, and the difficulties you anticipate facing.

Additionally, you should describe how your research findings will develop the basic science over the next 30 or 50 years, from a long-term perspective.

7. Submission Information

Applicants must submit the following 2 files, prepared entirely by themselves.

Your score will be deducted if the documents are incomplete.

(1) Application document (one-page slide document describing your research.

PDF file format. Within 10MB)

Formats can be obtained from (.pptx file is downloaded):

<https://www.shinshu-u.ac.jp/graduate/sogoiriko/information/uploads/proposal.pptx>

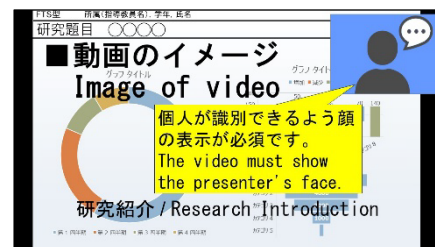
*Example file:

https://drive.google.com/file/d/10ZKBIRdeRgHwG_hc46TWc4qUwwfhh1v-/view

(2) 2 minutes-video presentation file. (MP4 file format. Within 100MB)

Please create video files using tools such as PowerPoint or Zoom's recording feature.

*The video must show the presenter's face so that he/she can be identified.



File-name:

One-page slide document file: spring_slide_Student(examinee's) ID_surname_name.pdf

Two- minutes video presentation file: spring_movie_Student(examinee's) ID_surname_name.mp4

Two files must be submitted via the application form below

<https://forms.gle/8uixZmmKqg8yUGzq8>

If you are unable to submit documents via this form, please contact us via email at

shin-jisedai@shinshu-u.ac.jp

(Graduate School Office, Division of Student Affairs)

8. Submission Period

Monday, March 4 - Monday, March 11, at 12:00 p.m. (Japan time)

9. Screening Method

(1) Document screening (primary screening)

Application documents submitted by applicants will be screened.

(2) Interview screening (secondary screening)

Applicants who pass the document screening will move on to an interview screening (online).

The interview screening will be conducted on **Thursday, March 28**, at 5:00 p.m. (Japan time).

Details will be provided to eligible applicants as they become available.

We cannot accommodate changes in interview times, so please secure your schedule.

10. Selection

Applicants will be notified if they were selected by email in April.

11. Obligations of Selected Students

(1) Requirements

- Program students must take an e-learning course on research ethics through the APRIN e-learning program (CITI Japan). (Applicants should complete this requirement by the time they submit their application if possible.)
- Program students must submit an activity report on a regular basis.
- Program students must participate in program events, such as "Shinshu Tamonjuku".
- Program students must consent to the sharing by Shinshu University of their email address with JST so that that organization can follow up directly with selected students.
- Program students must apply for a JSPS Research Fellowship (DC2).
- Registration for the "Job-type Research Internship (Coop-J internships)" program.
- Registration with the Japan Graduates Database (JGRAD). Cooperation in surveys regarding post-graduation career paths and research achievements.
- Proper execution of research funds in accordance with the rules.
- Cooperation in promotional activities within the scope that does not pose any hindrance.

(2) Recommendations

Program students will be expected to take the initiative to actively pursue career development opportunities, for example by participating in the following initiatives:

- Applying to the open call program within the project.
- Participation in a long-term internship at a company or other entity or in work as a research staff member at a company or other entity
- Participation in exchanges hosted by JST for doctoral students from various universities
- Active participation in other activities as instructed by the program's leadership

12. Cancellation/cessation of support

(1) If the student fails to satisfy the requirements set forth in "1. Eligibility", your program support will be terminated.

(2) In the event it determines any of the following has occurred, the program's leadership will either provide guidance so that the student can improve his or her conduct or, if it determines that such improvement will not be forthcoming, cancel the student's selection for participation in the program. And then, you might have to refund your money which we paid such as research financial incentive.

- If the student is not fulfilling the essentials under the program
- If the student fails without a legitimate reason to implement the research plan he or she submitted at the time of application for research incentives
- If the student is subjected to disciplinary action as stipulated in the Shinshu University Graduate School Regulations.

(3) In the event a student is found to have conducted fraudulent research or included false information on his or her application, his or her selection will be canceled, and he or she will be required to repay research incentives already received.

*You must be in Japan to receive aid.

13. Other

1. JST requires that universities conduct a survey to track selected students' careers for at least 10 years after graduation. Successful applicants are required to cooperate with this tracking survey and report associated information to the University. Be sure to register with the Japan Graduates Database (JGRAD).
2. The names and other information of students selected to receive research incentives will be published on the University's website and in other materials.
3. Since the stipend portion of the research incentive is considered miscellaneous income, successful applicants will need to pay tax on those funds by filing their income taxes the year after they are received. Applicants who are listed as a dependent of a taxpayer (for example, a parent) should inform that person that they will be receiving a stipend that is treated as miscellaneous income and seek instructions from the person responsible for tax issues at that person's employer.
4. Program students who newly become JASSO Type 1 Scholarship recipients from FY2023 are not eligible for the "Return Exemption System for Particularly Meritorious Achievements" in the doctoral program.

Reference

1. Under Japan's Income Tax Act, if a dependent of a family member such as a parent earns more than ¥380,000 after necessary expenses are subtracted from stipend payments received from January through December, that family member may not be able to claim the student as a dependent, and the student will be subject to income tax. In addition, the dependent will have to pay resident tax the following tax year based on his or her income during the year in question.
2. For the purpose of health insurance and mutual-association insurance, students who expect to receive stipend payments of greater than ¥1.3 million during the year may not be classified as dependents. Since the amount of the stipend is determined at the outset, students who do not meet the requirements for being classified as a dependent are responsible for registering for National Health Insurance (Kokumin Kenko Hoken).
3. Although the manner, in which household income is calculated for students who are exempt from tuition payments depends on their particular circumstances, successful applicants may not qualify for a tuition exemption as a result of their income.

¹ Regional Innovators: Those who can boldly tackle challenge-driven research with high academic expertise and intellectual curiosity.

²Shinshu Tamonjuku: The program will establish the Shinshu Tamonjuku, which will help students refine their commitment to social and academic reform and put into practice the mission they have discovered for themselves while focusing on research activities that deepen academic specialization. Drawing on energy derived from creative exchanges between students from different fields, the School will involve talented researchers and entrepreneurs in an effort to convert new value for the society of the future and plan its realization. The School will pursue a Regional Implementation Project through which students will refine their dedication to value realization in an effort to create and implement problem-solving research that brings together different fields. The School will also offer intensive English education in order to foster an outlook that makes use of differences along with academic ability through international activities.

The initiative was established in the fiscal year 2021. Starting from the fiscal year 2024, we will implement initiatives that have evolved into the "Next Generation Advanced Human Resources/Regional Innovators Development Program" as the "Second Shinshu Tamonjuku".